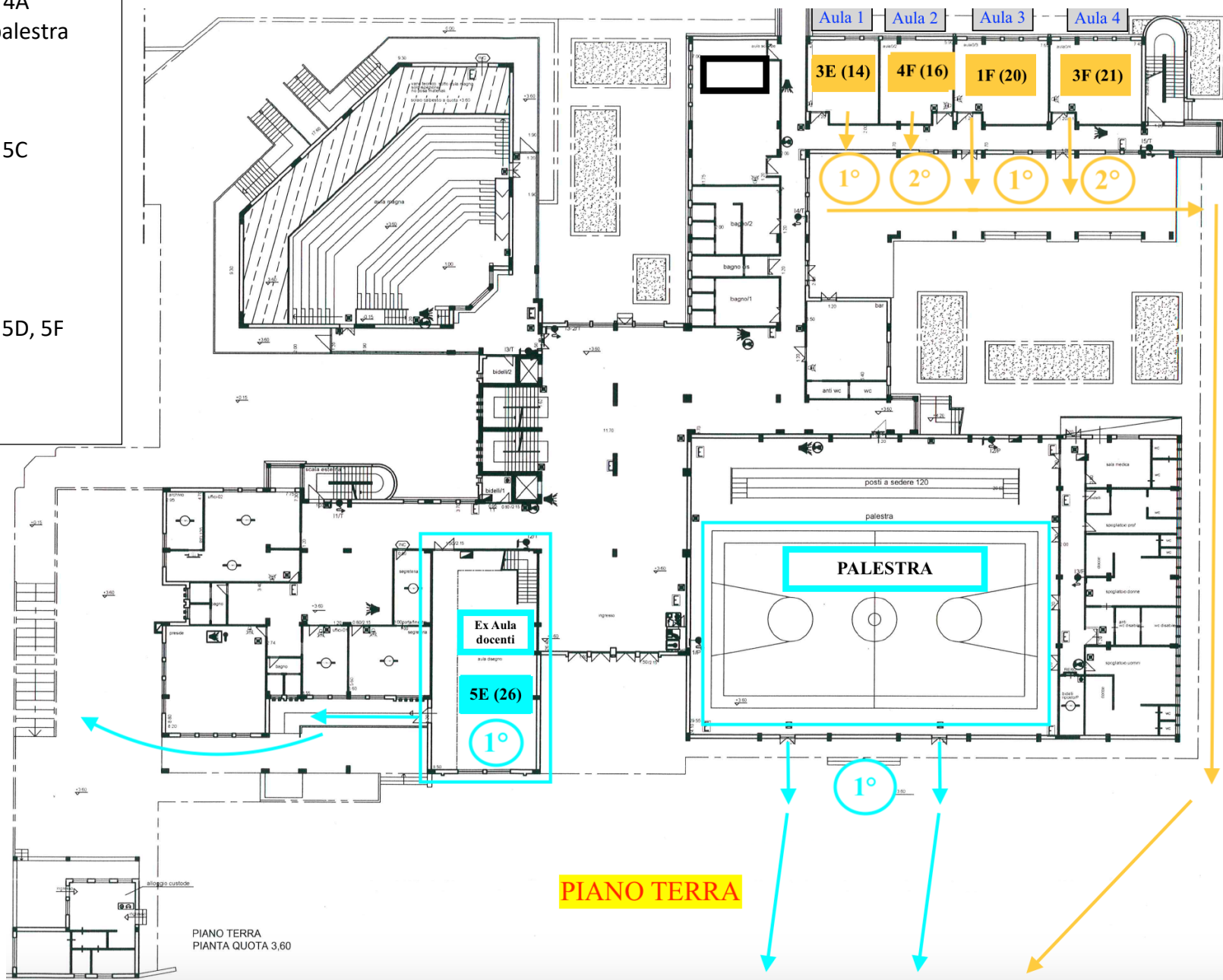


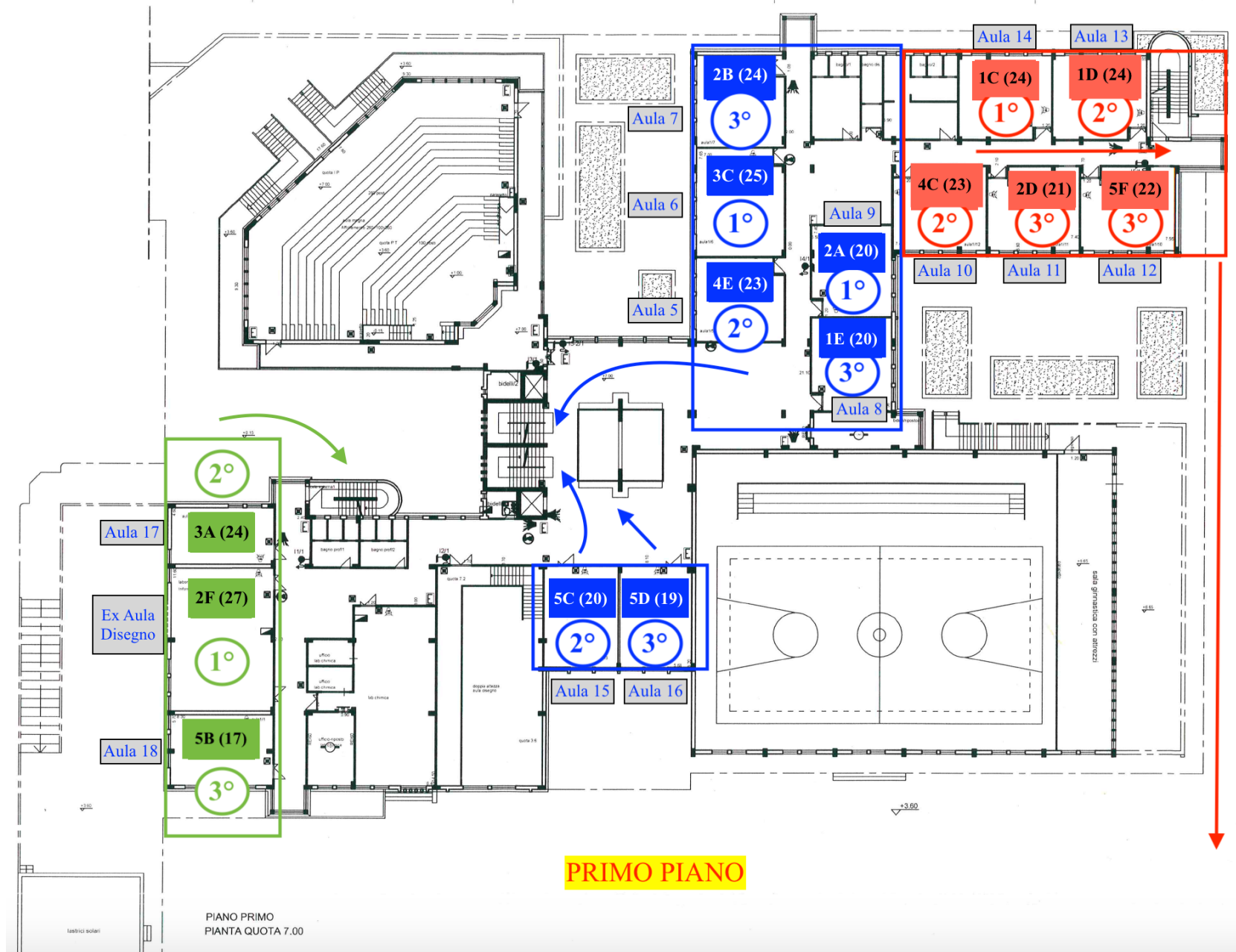
Collocazione classi/aule LICEO SCIENTIFCO a.s. 2021-22

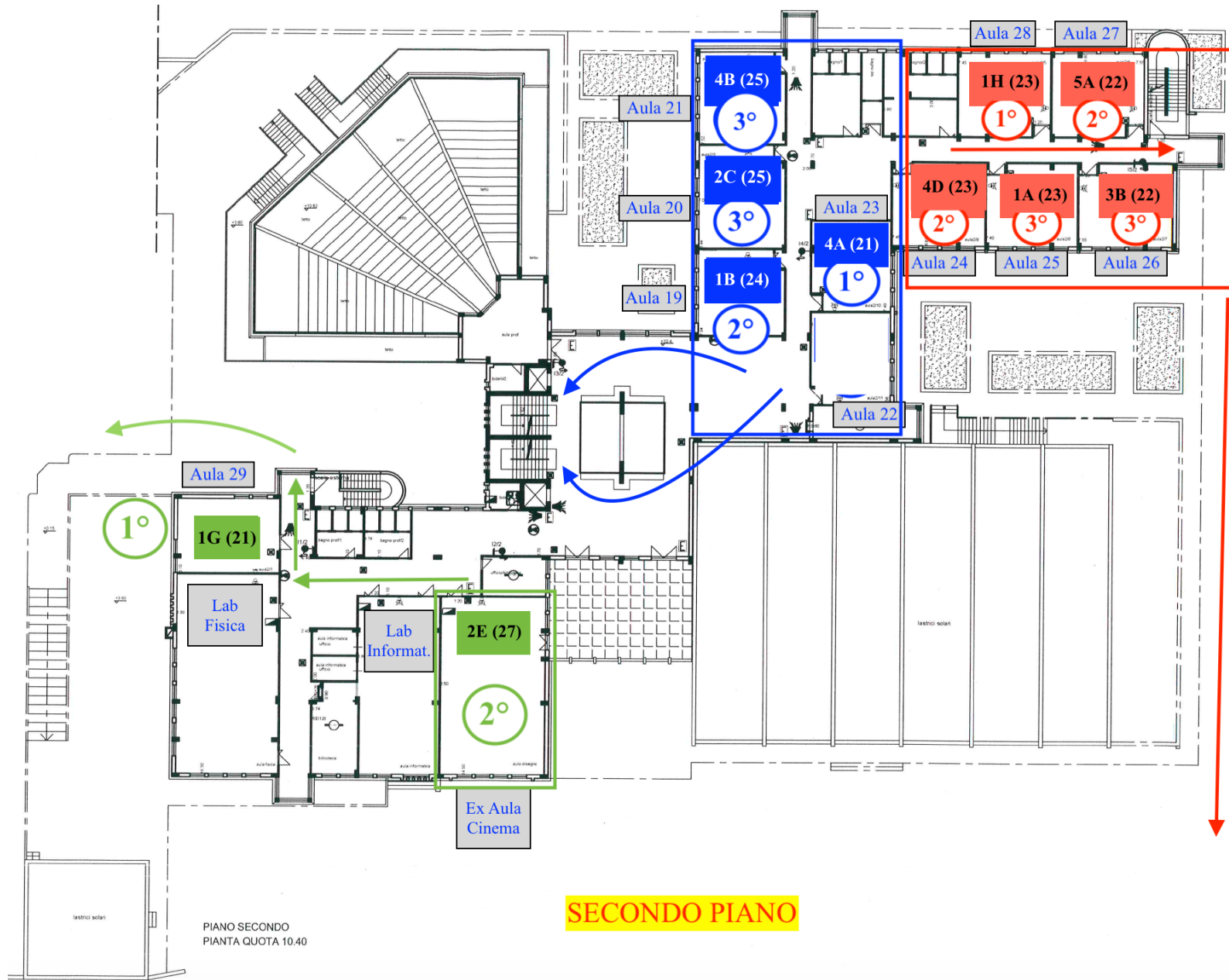
- 1°
 PT: 1F, 3E, 5E
 1P: 1C, 2A, 2F, 3C
 2P: 1G, 1H, 4A
 Totale 10 classi + palestra

- 2°
 PT: 3F, 4F
 1P: 1D, 3A, 4E, 4C, 5C
 2P: 1B, 2E, 4D, 5A
 Totale 11 classi

- 3°
 1P: 1E, 2B, 2D, 5B, 5D, 5F
 2P: 1A, 2C, 3B, 4B
 Totale classi 10







PIANO SECONDO
PIANTA QUOTA 10.40

SECONDO PIANO